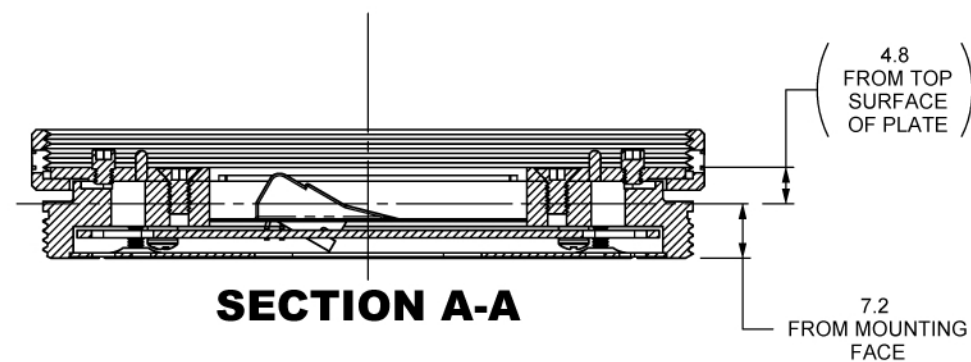
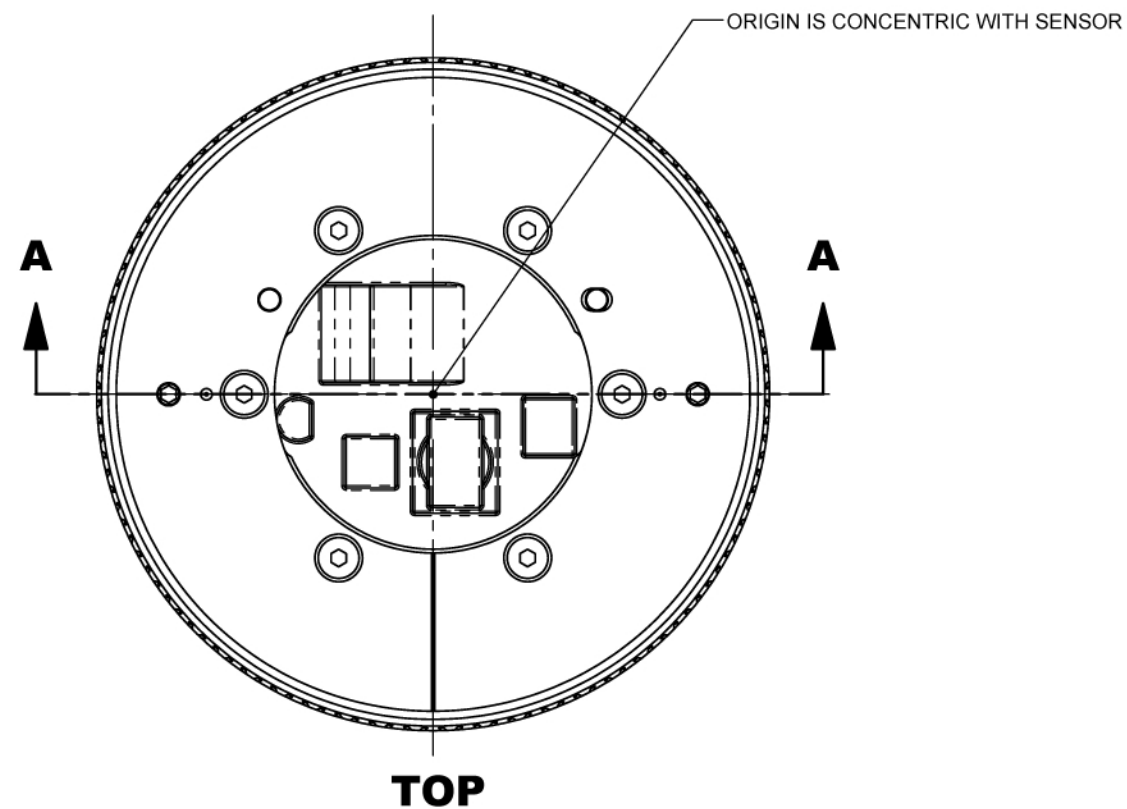
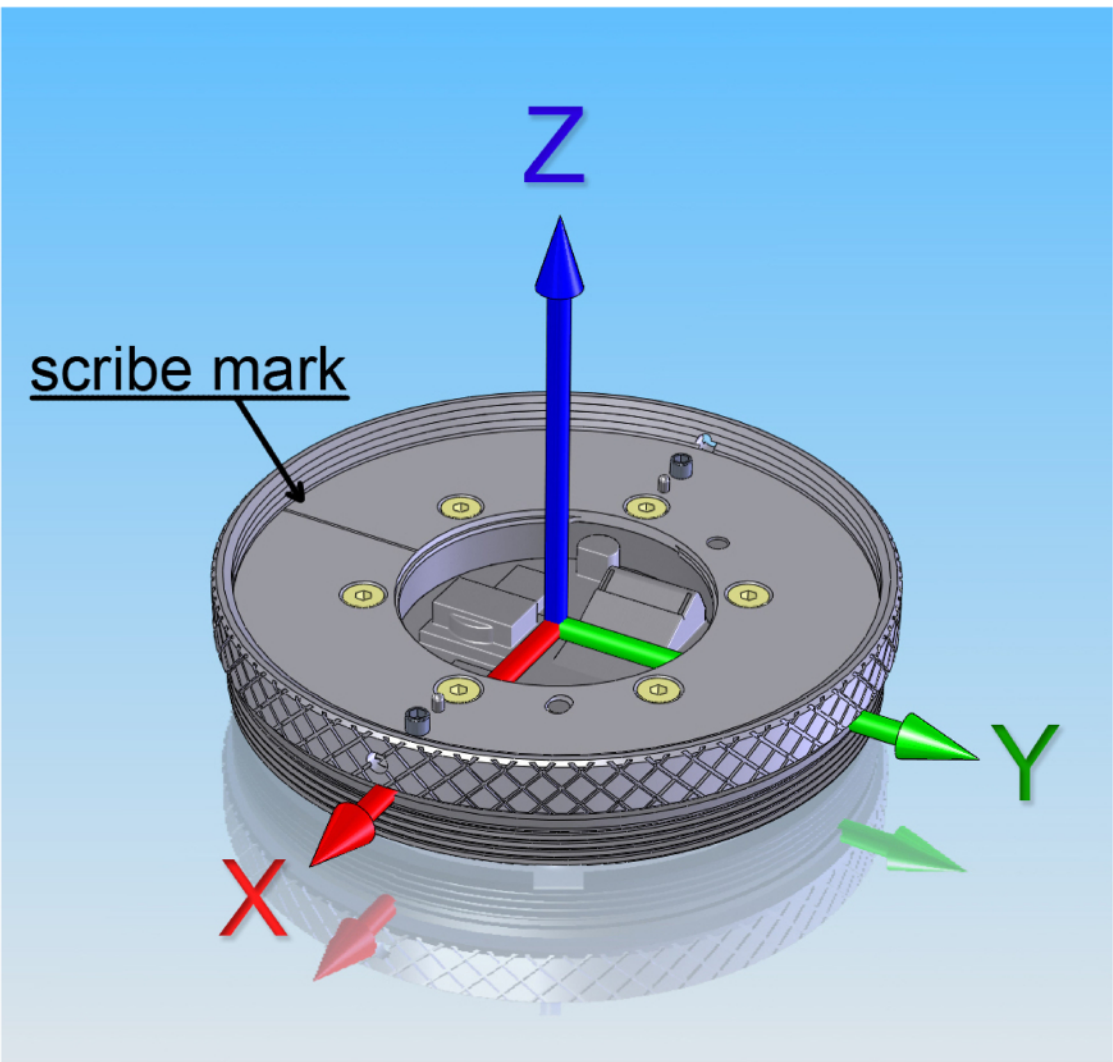


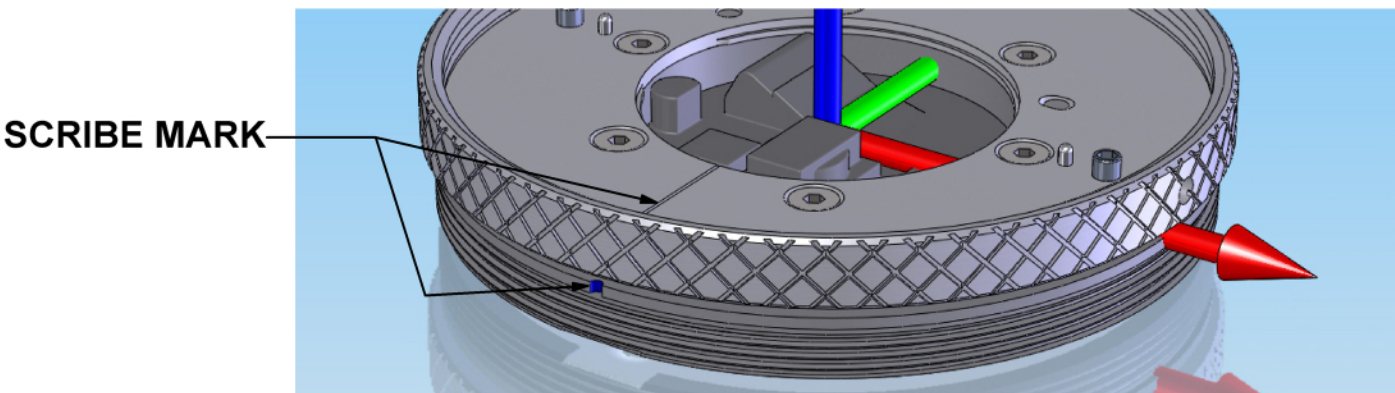
ORIGIN LOCATION OF FORCE / TORQUE SENSOR



AXES



VIEW 1



VIEW 2

Barrett Confidential

This drawing and the intellectual property it describes are the property of Barrett Technology, Inc. Upon accepting receipt of this drawing you agree to the following: 1. No copies shall be made without written consent. 2. The drawing and its contents shall be guarded as confidential. 3. Upon request you shall return this drawing and any copies within 2 business days. ©1988-2007 Barrett Technology, Inc.

Barrett Technology, Inc.

625 Mount Auburn Street, Cambridge, MA 02138 U.S.A.
www.barrett.com Ph +617-252-9000 Fx +617-252-9021 mfg@barrett.com

Note: all dimensions in mm.

Documentation

Drawn	EK	Dec 07, 2010
Checked	DW	Dec 07, 2010

6-Axis Force Torque (F/T) Sensor

Size B	PN B4066	REV 01.00
Scale 1:1	Mass 136.157 g	Sheet 1 of 1